



**SteelTek™**  
2016 Product Guide





## Table of Contents

---

### 03 - 07 | Product Specifications

Item Numbers

Sizing

MC Qty.

MC Weight

### 08 | Coffee Table Project

The need-to-know details on how to make your living room pop.

### 09 | Industrial Railing Project

Railling to help your business or industrial needs.

### 10 | Grill Side Table Project

The perfect accessory to help with your summer patio events.



New fittings and Schedule 30 plain end pipe that should be used for a number of DIY projects such as racking, tables, railings, display fixtures along with countless others. A full assortment of fittings will be available and can be used with our NON-Threaded pipe.

These fittings are great for home, business and industrial projects! These fittings are perfect for the craft person who likes to move or the business owner looking to protect their employees. There is no limit on what can be made with these fittings and pipe.

***Not for plumbing application or for scaffolding uses!***



### SINGLE SOCKET TEE

Item No.	Size	MC Qty.	MC Wt.
670-104HC	3/4"	10	4.2
670-106HC	1-1/4"	8	8.16



### THREE SOCKET TEE

Item No.	Size	MC Qty.	MC Wt.
670-404HC	3/4"	10	7.1
670-406HC	1-1/4"	8	13.92



### 90° SIDE OUTLET TEE

Item No.	Size	MC Qty.	MC Wt.
671-604HC	3/4"	10	6
671-606HC	1-1/4"	8	10.72



### SINGLE SOCKET TEE

Item No.	Size	MC Qty.	MC Wt.
672-906HC	1-1/4"	8	11.52



### INTERNAL SWIVEL TEE

Item No.	Size	MC Qty.	MC Wt.
674-706HC	1-1/4"	8	7.6



### 0°-45° THREE SOCKET CUSTOM TEE

Item No.	Size	MC Qty.	MC Wt.
672-706HC	1-1/4"	8	14.4



### SHORT TEE

Item No.	Size	MC Qty.	MC Wt.
675-306HC	1-1/4"	8	9.52



### LONG TEE

Item No.	Size	MC Qty.	MC Wt.
675-506HC	1-1/4"	4	7.92



### ELBOW

Item No.	Size	MC Qty.	MC Wt.
675-406HC	1-1/4"	8	11.2





## 90° ELBOW

Item No.	Size	MC Qty.	MC Wt.
672-504HC	3/4"	10	5.2
672-506HC	1-1/4"	8	10.48



## SIDE OUTLET ELBOW

Item No.	Size	MC Qty.	MC Wt.
672-804HC	3/4"	10	7.7
672-806HC	1-1/4"	4	7



## OBTUSE ANGLE ELBOW

Item No.	Size	MC Qty.	MC Wt.
672-406HC	1-1/4"	8	10.96



## SWIVEL ELBOW

Item No.	Size	MC Qty.	MC Wt.
672-536HC	1-1/4"	8	15.28



## FOUR SOCKET CROSS

Item No.	Size	MC Qty.	MC Wt.
675-804HC	3/4"	8	7.6
675-806HC	1-1/4"	5	10.85



## THREE SOCKET CROSS

Item No.	Size	MC Qty.	MC Wt.
677-604HC	3/4"	10	7.4
677-606HC	1-1/4"	8	12.88



## TWO SOCKET CROSS

Item No.	Size	MC Qty.	MC Wt.
671-904HC	3/4"	10	6
671-906HC	1-1/4"	8	10.88



## TWO SOCKET CROSS

Item No.	Size	MC Qty.	MC Wt.
675-605HC	1-1/4"	8	12.4



## ADJUSTABLE CROSS

Item No.	Size	MC Qty.	MC Wt.
673-006HC	1-1/4"	2	4.56





## CROSS OVER

Item No.	Size	MC Qty.	MC Wt.
676-104HC	3/4"	10	4.4
676-106HC	1-1/4"	8	8.16



## FLANGE

Item No.	Size	MC Qty.	MC Wt.
673-104HC	3/4"	10	6.3
673-106HC	1-1/4"	8	10.88



## STANDARD RAILING FLANGE

Item No.	Size	MC Qty.	MC Wt.
673-204HC	3/4"	10	8.8
673-206HC	1-1/4"	5	9.35



## WALL FLANGE

Item No.	Size	MC Qty.	MC Wt.
674-606HC	1-1/4"	8	13.36



## ANGLE FLANGE

Item No.	Size	MC Qty.	MC Wt.
675-206HC	1-1/4"	3	7.02



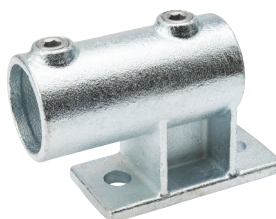
## OFFSET FLANGE

Item No.	Size	MC Qty.	MC Wt.
679-904HC	3/4"	10	4.9
679-906HC	1-1/4"	8	5.12



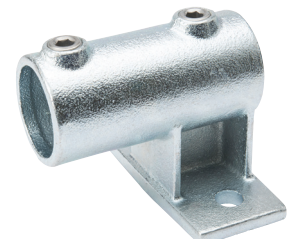
## ADJUSTABLE SIDE OUTLET

Item No.	Size	MC Qty.	MC Wt.
674-804HC	3/4"	10	3.9
674-806HC	1-1/4"	8	7.36



## RAILING SIDE SUPPORT (VERTICAL)

Item No.	Size	MC Qty.	MC Wt.
674-406HC	1-1/4"	4	10.28



## RAILING SIDE SUPPORT (HORIZONTAL)

Item No.	Size	MC Qty.	MC Wt.
674-506HC	1-1/4"	4	19.84



## RAIL SUPPORT

Item No.	Size	MC Qty.	MC Wt.
674-304HC	3/4"	10	6.5
674-306HC	1-1/4"	8	7.92



## STRAIGHT COUPLING

Item No.	Size	MC Qty.	MC Wt.
674-904HC	3/4"	10	5.9
674-906HC	1-1/4"	8	9.6



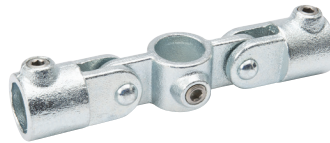
## GROUND SOCKET

Item No.	Size	MC Qty.	MC Wt.
673-406HC	1-1/4"	2	10.86



## COMBINATION SOCKET

Item No.	Size	MC Qty.	MC Wt.
676-504HC	3/4"	10	6.1
676-506HC	1-1/4"	4	5.8



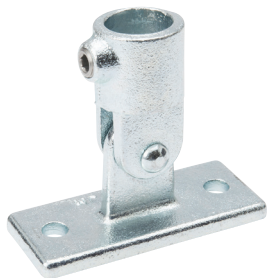
## DOUBLE SWIVEL SOCKET

Item No.	Size	MC Qty.	MC Wt.
676-704HC	3/4"	10	14.7
676-706HC	1-1/4"	4	11.52



## 90° CORNER SWIVEL COMBINATION

Item No.	Size	MC Qty.	MC Wt.
676-804HC	3/4"	8	11.68
676-806HC	1-1/4"	4	10.44



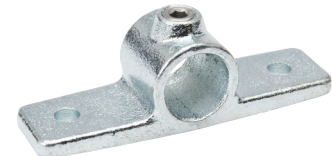
## SWIVEL BASE

Item No.	Size	MC Qty.	MC Wt.
676-904HC	3/4"	8	10.32
676-906HC	1-1/4"	6	10.68



## SINGLE SWIVEL SOCKET

Item No.	Size	MC Qty.	MC Wt.
677-304HC	3/4"	10	8.4
677-306HC	1-1/4"	8	13.6



## OFFSET FLANGE WITH TWO TABS

Item No.	Size	MC Qty.	MC Wt.
679-804HC	3/4"	10	6.7
679-806HC	1-1/4"	8	6.48





## HOOK

Item No.	Size	MC Qty.	MC Wt.
678-204HC	3/4"	10	3.5
678-206HC	1-1/4"	8	3.6



## GATE EYE

Item No.	Size	MC Qty.	MC Wt.
673-804HC	3/4"	10	3.5
673-806HC	1-1/4"	8	3.68



## PIN FITTINGS

Item No.	Size	MC Qty.	MC Wt.
674-004HC	3/4"	10	5.3
674-006HC	1-1/4"	8	9.2



## END PLUG

Item No.	Size	MC Qty.	MC Wt.
678-404HC	3/4"	10	1.06
678-406HC	1-1/4"	8	2.008



## SWIVEL CASTER W/ BRAKE

Item No.	Size	MC Qty.	MC Wt.
678-504 2-Pack	2"	6	1.60



## NON-THREADED PIPE

Item No.	Size	Length
564-040PE30LW	3/4"	4"
564-060PE30LW	3/4"	6"
564-120PE30LW	3/4"	12"
564-180PE30LW	3/4"	18"
564-240PE30LW	3/4"	24"
564-360PE30LW	3/4"	36"
564-720PE30LW	3/4"	72"
564-1200PE30LW	3/4"	10'
566-240PE30LW	1-1/4"	24"
566-360PE30LW	1-1/4"	36"
566-720PE30LW	1-1/4"	72"
566-1200PE30LW	1-1/4"	10'



## DIRECTIONAL CASTER

Item No.	Size	MC Qty.	MC Wt.
678-604 2-Pack	2"	6	1.02



## Coffee Table

This simple yet functional coffee table is a new twist on home decor and functionality. Using structural fittings & piping, you can have a coffee table that works in a multitude of settings yet will fulfill the role of the coffee table.

This project uses only a few of the pieces offered in this catalog and takes just an afternoon to make with little cleanup needed.

### Tools & Pieces Needed:

- 672-806HC: Side Outlet Elbow x 4
- 673-106HC: Flange x 4
- 566-240PE30LW: 24" Pipe x 1
- 566-360PE30LW: 36" Pipe x 4
- Allen Wrench
- Clear Kiln-Dried Aspen Panel 3/4" x 24" x 48" x 2
- 50-Count #12 1.25" Flat Head Zinc Plated Interior/Exterior Wood Screws

### Assembly Instructions

1. Cut the 24" pipe into two 12" pieces
2. Cut the two of the four 36" pipe into four 18" halves for the legs
3. Place an 18" pipe into one of each Side Outlet Elbows and secure with included bolt.
4. Using the Side Outlet Elbows connect the two 12" pipes and two 36" pipes to make a rectangle with the 18" pieces pointing up.
5. Now secure the 12" and 36" pipes together with the bolts on the Side Outlet Elbows.
6. Next place a flange on each exposed end of the 18" pipes and secure with the flange bolts.
7. With your tabletop on the floor face down, place your table support onto the tabletop with flange side touching.
8. Use a ruler or measuring tape to ensure your support is centered and evenly spaced between each leg.
9. Use your purchased screws to attach the base to the table top through each hole of the flanges.



Structural fittings work great not only for home uses, but also for your business needs. This is one example of industrial railing.

This railing can be used to help make a barrier to keep vehicles from backing into your building or provide support for walkways.

## Tools & Pieces Needed:

- 670-106HC: Single Socket Tee x 5
- 672-506HC: 90° Elbow x 2
- 671-906HC: Two Socket Cross x 2
- 673-106HC: Flange x 3
- 1-1/4" x 6.1' Pipe x 1
- 1-1/4" x 3.3' Pipe x 3
- 1-1/4" x 2.9' Pipe x 4
- Allen wrench

## Assembly Instructions

1. Place on the floor one piece of 3.3' pipe and insert 2 pieces of 670-106HC and tighten socket screws of these short tees to a distance of 1.1' and 2.2' from one end of the pipe. Next insert 1 piece of 672-506HC on one end of the pipe and tighten the socket screw of this end of elbow.
2. Insert the 6.1' pipe in the other end of the 672-506HC placed on step 2 and tighten the socket screw of this end of elbow, then insert 1 pieces of 670-106HC and 1 piece of 672-506HC on the other end of the pipe and tighten the socket screw of this end of elbow.
3. Insert one piece of 2.9' pipe in each of 670-106HC and tighten the socket screws of these ends of short tees, then insert in the other end of each pipe one piece of 671-906HC and tighten the socket screw of this end of crosses.
4. Insert one piece of 2.9' pipe in each of 671-906HC and tighten the socket screw of this end of crosses, then insert in the other end of each pipe one piece of 670-106HC and tighten the socket screw of this end of cross.
5. Insert one piece of 3.3' pipe through each of 671-906HC and the 670-106HC placed on 6.1' pipe and tighten socket screws of all these fittings.
6. Insert one piece of 3.3' pipe through each of 670-106HC and the 672-506HC placed on 6.1' pipe and tighten socket screws of all these fittings.
7. Insert one piece of 673-106HC on each end of 3.3' pipe, tighten the socket screws of all these fittings.
8. Lift the railing guard and screw into the floor using the flange holes.







## Grill Side Table

The grill side table is exactly what you need to help host the perfect summer party. Simple to build and easy to modify, this project can take any number of forms to complement your patio furniture.

The best feature of the Grill Side Table is that it can be customized to fit your patio event needs. It also is simple to disassemble and transport to the next patio party.

### Tools & Pieces Needed:

- 673-106HC: 1-1/4" Flange x 8
- 678-206HC: 1-1/4" Hook x 4
- 673-104HC: 3/4" Flange x 2
- 672-504HC: 3/4" 90 Elbow x 2
- 566-360PE30LW: 1-1/4" x 36" Pipe x 4
- 564-240PE30LW: 3/4" x 24" Pipe x 1
- Allen wrench
- Kiln dried Aspen Panel 3/4" x 18" x 36" x 4
- 50-Count #12 1.25" Flat Head Zinc Plated Interior/Exterior Wood Screw

### Assembly Instructions

1. Place each hook on two of the 36" pipes and secure with bolts 6" from the top with the hook facing up.
2. Now place two flanges on each side of the 36" pipes and secure with the flange bolts.
3. With you tabletop on the floor face down, put each flange with the pipe attached in each corner of the table. Use a ruler or measuring tape to ensure that each leg of the table is evenly spaced.
4. Now use your purchased screws to attach each leg to the tabletop through each hole of the flanges.
5. Now put the bottom part of your Grill Cart on the floor and place the exposed flanges onto this surface. Make sure the two surfaces are aligned and the flanges correspond with the placement of the already-secured flanges on the top part of the cart.
6. Now use your purchased screws and secure the flanges into the bottom of your grill cart. Now flip over the entire car and mount your casters in each corner of the cart. Be sure the screws of the casters will not hit the screws of the flanges.
7. Now the cart can be flipped over again and rest on the casters.
8. Now put a 3/4" elbow on each end of the 3/4" x 15" pipe and place a 3" pipe in the other side of the elbow. Ensure that the 3" pipes are aligned and secure all three pipes together with the elbow bolts.
9. Now put a 3/4" flange on each exposed end of the 3" pipes and secure with the flange bolt. Place the cart handle on top of one of the short sides of the cart. Ensure that the handle is evenly spaced and secure with your purchased screws.





**Structural Fittings  
are not to be used for  
plumbing application  
or for scaffolding.**





**SteelTek™**

2016 Product Guide



B&K LLC  
8285 Tournament Drive  
Memphis, TN 38125

BK MC-001 | 06-2016